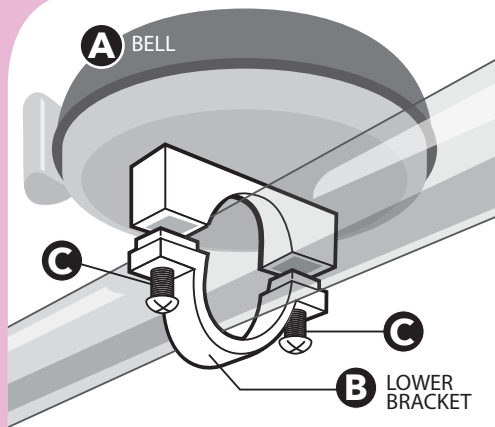


Zkids

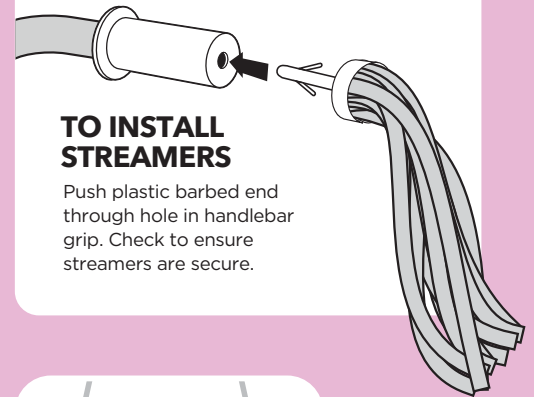
Pink and Pretty



BELL INSTRUCTIONS

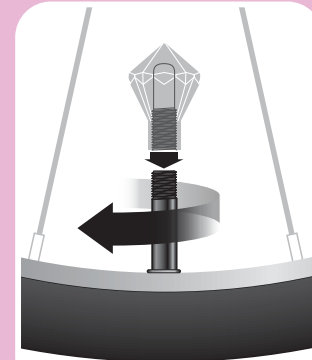
Requires Phillips head screwdriver.

1. Use Phillips head screwdriver to remove 2 screws (C) from bottom of bell.
2. Position the bell (A) in your desired location on your handlebar - ideally so that your fingers or thumb can easily reach the bell trigger.
3. Place lower bracket (B) under the bell (A).
4. Insert the screws through part (B) and loosely thread the screw into the bell (A).
5. Check that the bell housing is not touching any other part of the bicycle. Anything touching the bell housing will greatly reduce the sound of the bell.
6. Tighten the screws (clockwise) firmly in place.



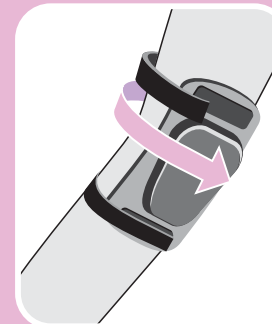
TO INSTALL STREAMERS

Push plastic barbed end through hole in handlebar grip. Check to ensure streamers are secure.



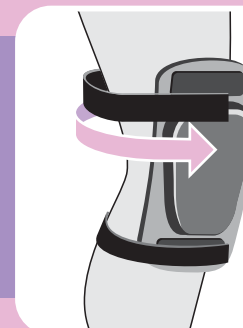
JEWEL VALVE CAPS (2)

Unscrew the caps on your tire tube's valve stem and replace with jewel valve caps.



ELBOW PADS (2)

Elbow pads are smaller than knee pads. Position pad in desired location on elbow. Pull lower strap around arm and connect to lower Velcro® area. Repeat with upper strap.



KNEE PADS (2)

Position knee pad in desired location on knee. Pull lower strap around leg and connect to lower Velcro® area. Repeat with upper strap.

usa.zefal.com

PRODUCT INFORMATION | INSTRUCTIONS | CUSTOMER SERVICE

For customer assistance call
800-278-2565