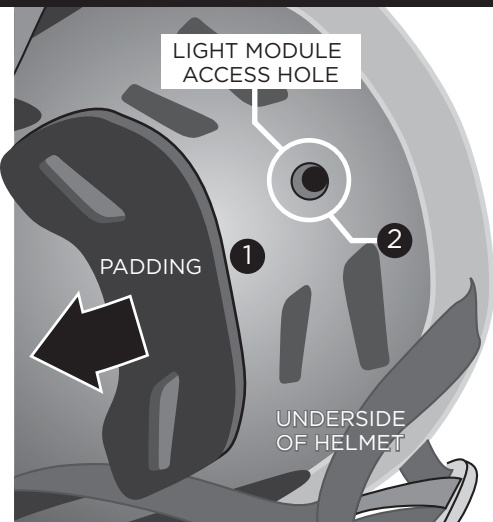
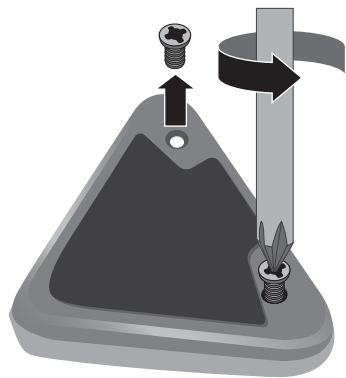


Ultra Light Helmet - CHANGING BATTERY

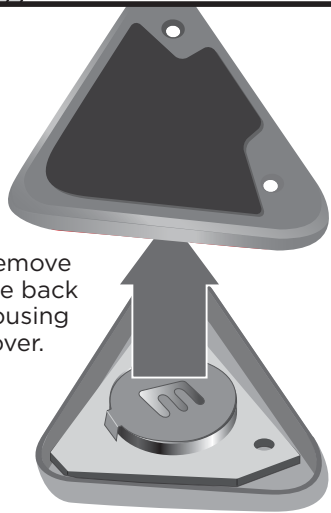


- 1 Look inside helmet. Peel back the rear padding as shown to reveal light module access hole.
- 2 Use pencil with eraser or other blunt-ended object (not pointed!) to push into the round hole and push against the back of the light module. (Note: light module held in place with Velcro®)

- 3 Once the light module has been removed, unscrew the 2 Phillips head screws.

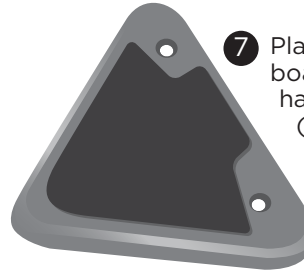
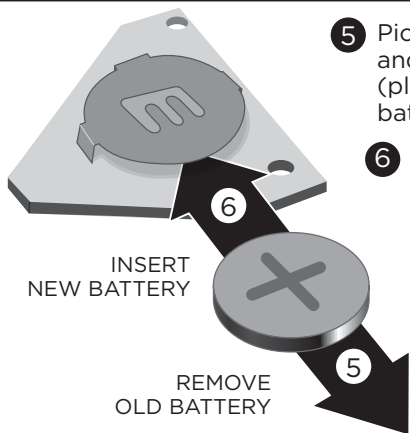


- 4 Remove the back housing cover.



- 5 Pick up the electronics board and remove the old battery (please dispose of the old battery properly).

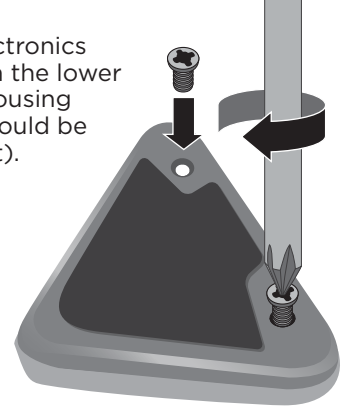
- 6 Insert new battery (CR2032) with the negative side facing down, towards the electronics board. (the positive side should be facing out towards you.)



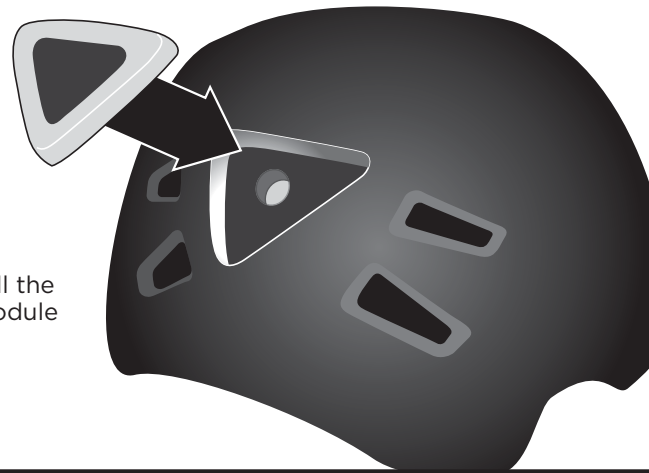
- 7 Place the electronics board back in the lower half of the housing (battery should be facing out).



- 8 Place the top half of the housing onto the lower half and insert and tighten the 2 screws.



- 9 Reinstall the light module into the helmet.

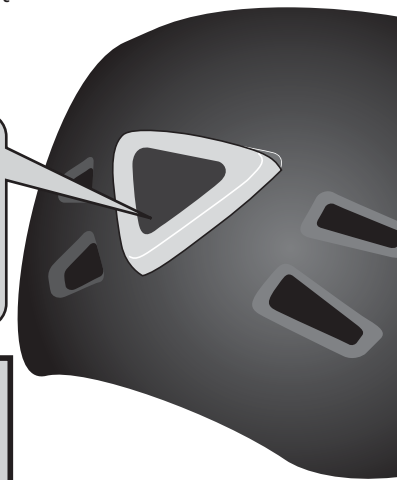


- 10 Press along edges of the light module to firmly secure Velcro® holding light module in place.

LIGHT OPERATION

Press center to cycle through modes:

- constant • flashing • off



usa.zefal.com

PRODUCT INFORMATION | INSTRUCTIONS | CUSTOMER SERVICE

For customer assistance call
800-278-2565

PRODUCT AND COLORS
MAY VARY.
VELCRO® is a registered
trademark of Velcro
Industries B. V.